

 **ALUMEX**[®]
Ultimate in Aluminium Profiles

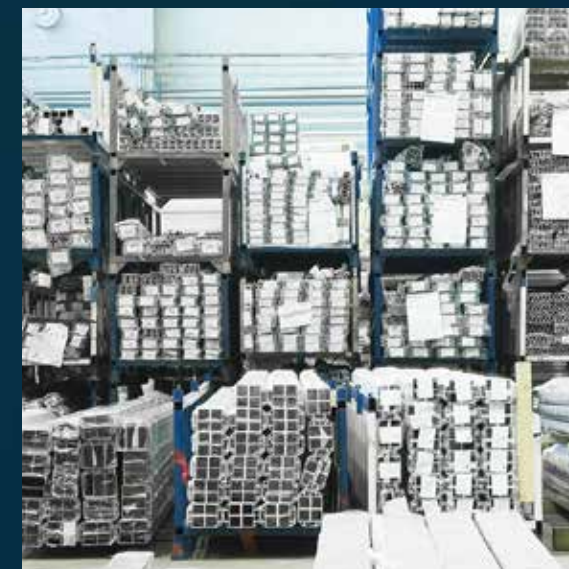
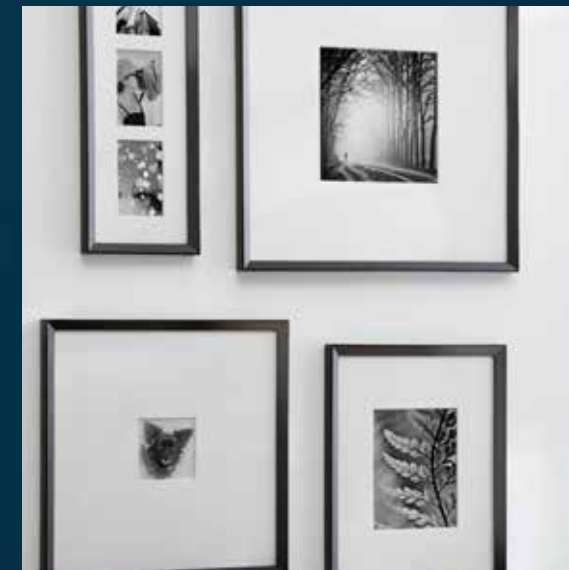
THE PATHWAY OF TOMORROW

The World Of
Hayleys[®]
Since 1878



Our journey to the peak

Excellence has been at our core since our incorporation in 1986. Our vision to be the premier aluminium extrusion manufacturer in the South Asian region has propelled us, at Alumex, to offer only the highest quality aluminium products for every extrusion need. Today we are equipped with modern extrusion, anodizing, powder coating, wood effect & chemical brightening facilities. Our diverse product portfolio and a singular focus have made us the foremost aluminium manufacturer in Sri Lanka and the only organization within its field to have a global presence. Our brands are backed by over three decades of expertise enabling us to become the most trusted brand and the market leader in Sri Lanka, a feat that has been strengthened by our merge with another giant in its field, Hayleys PLC.

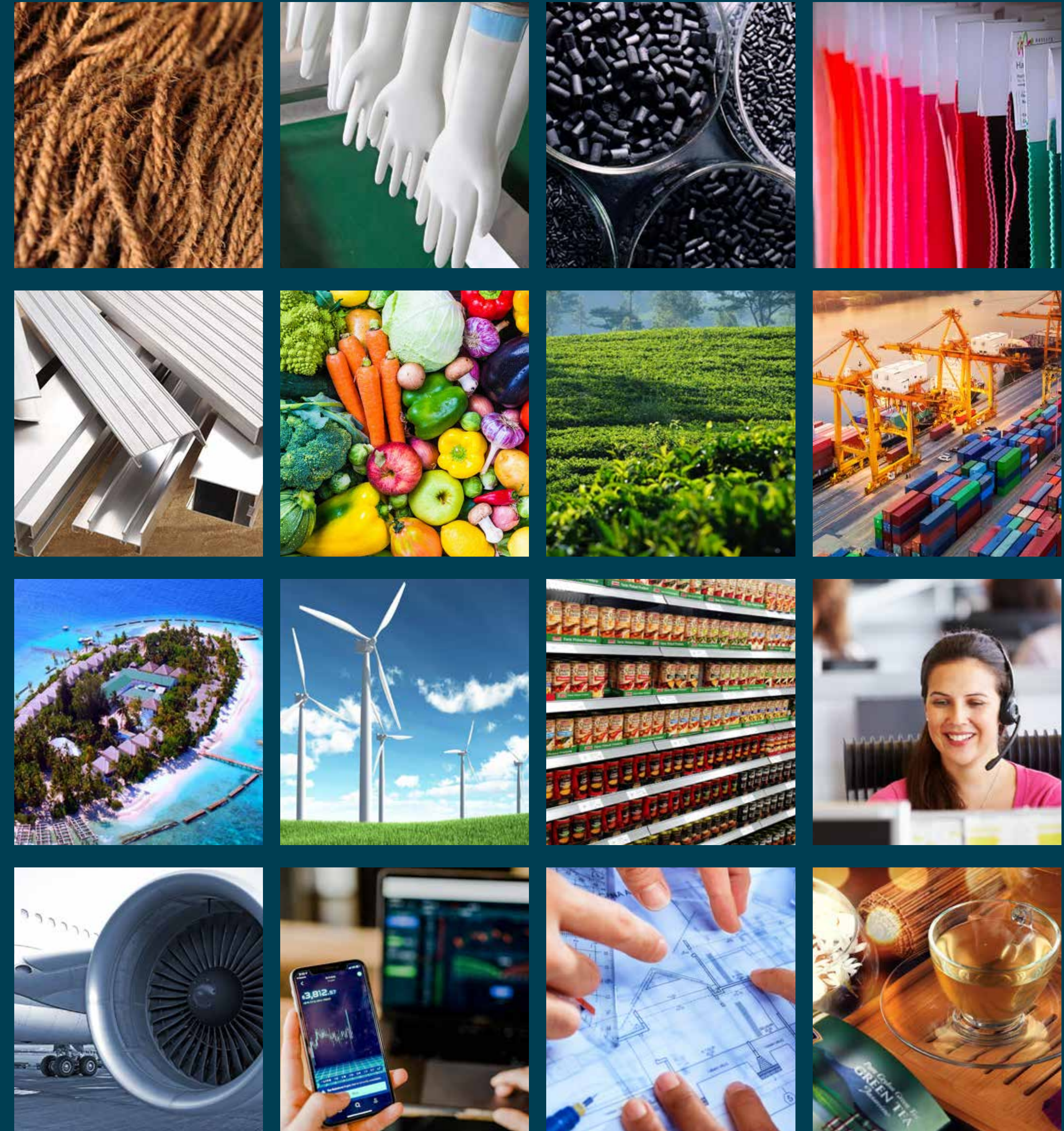




A powerhouse at the helm

As the largest and most diversified business conglomerate in Sri Lanka, Hayleys PLC boasts a rich history of 140 years. Throughout the years this powerhouse conglomerate has diversified its portfolio to 16 varied business sectors including aviation, agriculture, construction, engineering, leisure, retail, textiles, and transportation to name a few, enabling it to capture the markets of 17 countries in five continents. The Hayleys Group is a force to be reckoned with in the business arena, their acquisition of Alumex in 2010 has further strengthened our organization to become a formidable contender in our field.

www.hayleys.com



Our secret to success

Our Vision at Alumex is to be the premier aluminium extrusion manufacturer in the South Asian region while our Mission is to create customer intimacy with innovative aluminium solutions through world-class sustainable manufacturing practices. We strive to achieve our vision and mission through our value system, which encompasses the following:

- ☐ **INTEGRITY:** Ethical and transparent in all our dealings.
- ☐ **ENDURING CUSTOMER VALUE:** Enhancing experiences for every customer, from the rural farmer to the global consumer.
- ☐ **A WILL TO WIN:** Exhibiting the will to win is important to Alumex and its shareholders.
- ☐ **RESPECT FOR PEOPLE:** Treating everyone with respect and dignity, providing for the development of our people and rewarding them for good performance.
- ☐ **GOOD CITIZENSHIP:** Caring for the communities in which they work, actively supporting their growth and being environmentally responsible in all we do.
- ☐ **TEAMWORK:** Working with each other and with partners across boundaries to make things happen.
- ☐ **ACCOUNTABILITY:** Holding ourselves responsible to deliver what we promise.





Our path to progress

Since our initiation as a joint venture between Sri Lanka and South Korea in 1986, we have had many milestones that have brightened our history. The first being in 1988 with the anodizing plant and 6-inch extruder that began our commercial operations. In 1999, we installed the first powder coating plant, and subsequently in the year 2000 the 7-inch extruder was installed, the largest in Sri Lanka. 2008 saw the installation of a modern anodizing plant. 2010 saw us gain greater business prowess with our acquisition by Hayleys PLC. The horizontal fully-automated powder coating plant was installed in 2015. Our greatest achievement to date has been the establishment of South Asia's first vertical powder coating facility and the fully automated extrusion plant at the Ekala factory in 2018.



The power of our production

Our success on a local and global level is due to the production capacities of our factories located at Sapugaskanda, in Makola, and our plant in Ekala, Ja Ela. These two facilities are capable of manufacturing over 2000MT of aluminium extrusions per month. In addition, the new Alumex Prime Plant, the largest aluminium extrusion plant in Sri Lanka has the capacity to produce 1,000MT in aluminium extrusions and powder coating per month. Our modern high-tech anodizing plant has a combined capacity of over 3600MT per annum with the capability of coating extrusions with thicknesses ranging from 10 to 25 micron. These factors combined with nine distribution centers, seven concept centers, and 90 dealerships islandwide ensure that our quality products are available to every customer and buyer in the residential, commercial, and industrial sectors.



Our global impact

The quality of our products at Alumex coupled with our service standards has provided us with a strong portfolio of loyal and high-profile international customers, which are a testament to our business acumen and focus. Our high-quality, and value for money products, international accreditation, business flexibility, and superior customer service have enabled us to capture many international markets. Whilst continuously expanding our business operations we currently export products to Australia, Bangladesh, Canada, India, Kenya, the Maldives, Nepal, New Zealand, the Seychelles, Switzerland, the United Kingdom, and the United States.





Architectural



Hardware



Household



Industrial



Trading

Evolving our portfolio

Innovation has been at the forefront of our success in becoming and remaining the leading and most trusted aluminium manufacturing brand in the nation. To that end, we consistently integrate the latest technology with expertise to produce a comprehensive range of customizable aluminium fabrication products, which are made from premium materials and are sourced from reputable suppliers. This high-quality range of products is aptly suited for the architectural, hardware, household, industrial and trading categories along with Lumin satisfies the needs of both our local and international clients.

Our Architectural range includes doors, windows, curtain walls, sliding doors, aluminium building systems, handrails, louvers, office partitions, shop front doors & windows and aluminium skirting.

Our Household range includes mosquito mesh, kitchen cabinets, photo frames, ladders, cabinets and wardrobes.

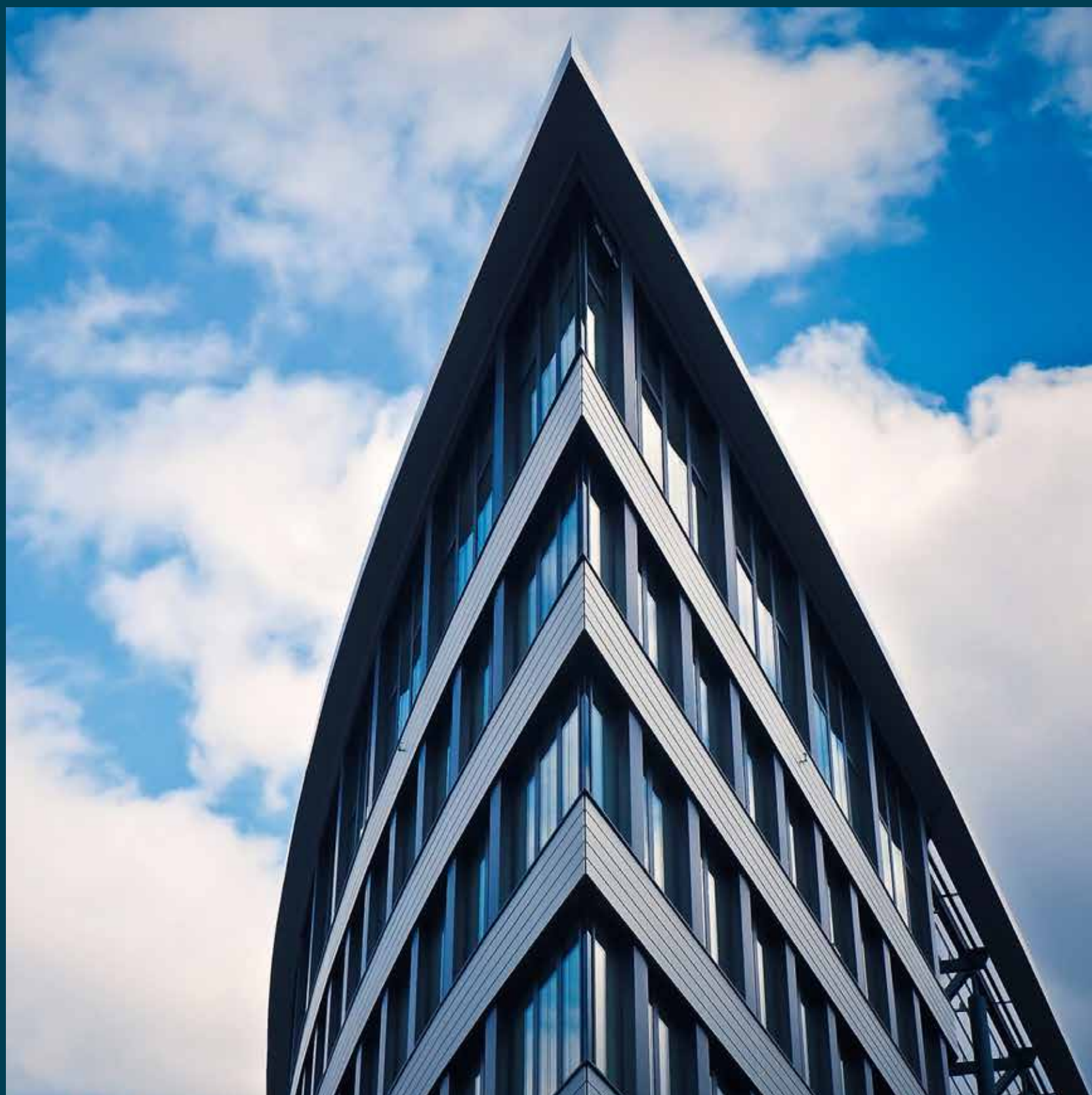
Our Hardware range includes round pipes and plates, rectangular pipes & square pipes, equal angle & unequal angle, and single channel & double channel.

Our Industrial range includes a solar ground mounting system and a solar roof mounting system.

Our Trading includes being the national distributor of Alpolic composite materials in Sri Lanka, a product manufactured at Mitsubishi Chemicals in Japan. We are also the authorised import and distribution agent for DuPont Corian in Sri Lanka. Manufactured in Japan and the USA, DuPont Corian is the number one material used for kitchen cabinets, and countertops.

Our Lumin brand includes aluminium doors and windows, which are made to the highest international manufacturing standards and quality.

Learn more – www.alumexgroup.com/products.html



A promise of excellence

- ☐ We offer minimum of 10-year product warranties which can be extended up to 30 years with specialized surface coatings.
- ☐ We offer a manufacturer's quality certificate to ensure that our products comply with international specifications and standards.
- ☐ We use premium quality raw materials.
- ☐ We conduct all required product testing in-house.
- ☐ We provide technical assistance to our customers.

Alumex Facilities & Capacities

Over 650 Employees

Three Extrusion Machines

(Total Capacity 2000MT/Month)

Max. CCD 260MM

1. 6" (Chinese – 15MN) – in 2010

2. 7" (South Korean – 18MN) – in 2000

3. 7"/8" Ekala (Presezzi, Italy – 23MN) – in 2018

Three Powder Coating Plants

(Capacity: 1425MT/Month)

1. Italteco Plant (2015) – 425MT/Month (Italy)

2. SAT Trivisan Cube (2018) – 1000MT/Month (Italy)

Anodizing Plant & Chemical Brightening

Capacity: 400MT/Month (Monthly Engineering; Italy)

Wood Finish Plant

Capacity: 156MT/Month



Our world standards

The commitment of our team at Alumex to achieve the highest standards of product quality and maintain corporate integrity is unsurpassed, and in that light, we have garnered several local and global certifications. With quality control as a founding principle of our organization, we have received the Qualicoat, Qualicoat-Sea Side, Qualanod, and ISO 9001:2015 & SLS certifications. In addition, we are Sri Lanka's only aluminium profile manufacturer to be awarded accreditation for UKAS testing.

Our certifications enable us to offer our customers a warranty of up to 30 years on all our powder coated and anodized products.





Quality standards

1. ISO 9001:2015

2. Qualicoat, Qualicoat (Sea Side) and Qualanod

3. SLS 1411:2011 (Powder Organic Coating)

- ☐ ISO 1520 – Paints and varnish (Cupping test)
 - ☐ ISO 2409 – Paints and varnish (Cross cut test)
 - ☐ ISO 2808 – Paints and varnish (Determination of film thickness)
 - ☐ ISO 2813 – Paints and varnish (Determination of specular gloss)
 - ☐ ISO 2360 – Paints and varnish (Measurement of coating thickness)
 - ☐ ISO 3668 – Paints and varnish (Visual comparison of the colour of paint)
 - ☐ ISO 3696 – Water for analytical laboratory use
 - ☐ ISO 3892 – Determination of coating mass per unit area
 - ☐ BS 6496:1984 – Powder coating application
4. SLS 1410:2011 (Extrusion Aluminium alloy profiles for Architectural Application)
- ☐ BSEN 12020-1:2008 – Aluminium and aluminium alloy (Extruded precision profile in alloy 6060 and 6063)
 - ☐ BSEN 12020-2:2008 – Aluminium and aluminium alloy (Tolerance on dimensions and form)
 - ☐ BSEN 573-3:2009 – Aluminium and aluminium alloy (Chemical composition and form wrought product)
 - ☐ BSEN 755-2:2009 – Aluminium and aluminium alloy (Mechanical properties)

Technical standards for alumex extrusions

Description	Test method	Standard
Chemical Composition	BSEN 515,BSEN 573,BSEN 755,BSEN 12020-2,SLS 1410	Primary Aluminum alloy BSEN 6063,6060 or an equivalent Silicon (0.35 – 0.45)% Magnesium (0.45 – 0.55)%, Iron 0.2% max, etc... or Alloy 6061, 6082.
Tensile Strength & Temper	ISO 6892:2009	Minimum 175 N/mm ² T1, T4, T5, T6, T66
Wall Thickness	BS EN 12020-2	CCD≤100 range ±0.15 CCD≥100 range ±0.20
Length	BS EN 12020-2	2m ≤ L ≤ 5m Length Tolerance is (+7mm to -0) & 5m < L ≤ 7m Length Tolerance is (+10mm to 0)

Technical standards for alumex anodized extrusions

Description	Test method	Standard
Film Thickness	EN ISO 2360	(10-15) μ , (15-20) μ (20-25) μ
Weight loss	BSEN ISO 3210	Maximum loss of weight 30mg/dm ²
Dye Spot	BSEN 12373-4	Rating is ≤ 2

Technical standards for Alumex powder coated extrusions

Description	Test method	Standard
Dry Film Thickness	EN ISO 2360	According to powder supplier's Spec.
Gloss, initial,(angle 60°)	ISO 2813	30 ± 5 , 70 ± 7, 100 ± 10
Crosshatch(2mm + tape)	EN ISO 2409	Cross cut rating GT0 Non of square of the lattice is detached
Impact	EN ISO 6272	No detachment after tape pull adhesion test
Bend	EN ISO 1519	No detachment after tape pull adhesion test
Cupping	EN ISO 1520	Withstand minimum of 5mm without any detachment from the substrate
Indentation	EN ISO 2815	Indentation resistance should be a minimum of 80 ($\alpha B > 80$)
Salt spray test	EN ISO 9227	No corrosion creep from the scratch (one side), after the test, No blistering after test



Sustaining our future

Our responsibility lies in ensuring long-term social and economic benefits to all our stakeholders. Every initiative we have designed has helped to further this cause as we strive to uplift and enhance the quality of life of all communities in the nation. We achieve this on many levels.

By introducing eco-friendly building materials, and managing, reducing, reusing, and recycling material in our plants, we minimize our impact on nature and preserve the environment. This is clearly evident in 'The Alumex Tree Planting Project' in which 140 saplings of fruit trees and those known for its timber were planted to commemorate World Environment Day. Currently, over 1536000 trees have been saved by the endeavors of Alumex.

The welfare of our employees and stakeholders is paramount. To that end, we have taken many measures to ensure the safety of our employees at all our premises. Also, we invest in career development and training while promoting a healthy work-life balance, thereby motivating our employees.

We give back to the community by our involvement with schools, government technical colleges, and training institutions to promote knowledge and skill improvement among the youth.



www.alumexgroup.com www.lumin.lk